

THIS INSTRUMENT PREPARED BY
 DAVID P. LINDLEY
 OF
CAULFIELD and WHEELER, INC.
 SURVEYORS - ENGINEERS - PLANNERS
 7900 GLADES ROAD, SUITE 100
 BOCA RATON, FLORIDA 33434 - (561)392-1991
 CERTIFICATE OF AUTHORIZATION NO. LB3591

VISTA CENTER - PARCEL 6

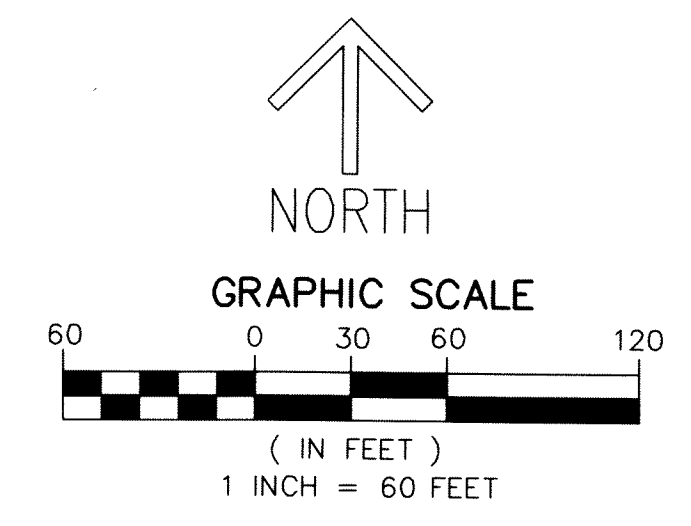
BEING A REPLAT OF TRACTS "A", "B", "C", "D" AND "W" OF EMERALD DUNES-PARCEL 6,
 ACCORDING TO THE PLAT THEREOF, AS RECORDED IN PLAT BOOK 107, PAGES 68 AND 69 OF THE PUBLIC RECORDS OF PALM BEACH COUNTY, FLORIDA,
 LYING IN SECTION 22, TOWNSHIP 43 SOUTH, RANGE 42 EAST, PALM BEACH COUNTY, FLORIDA

LEGEND/ABBREVIATIONS

- ☉ - CENTERLINE
- Δ - DELTA (CENTRAL ANGLE)
- E - EASTING (WHEN USED WITH COORDINATES)
- FPL - FLORIDA POWER & LIGHT COMPANY
- L - ARC LENGTH
- LB - LICENSED BUSINESS
- N - NORTHING (WHEN USED WITH COORDINATES)
- N.P.B.C.I.D. - NORTHERN PALM BEACH COUNTY IMPROVEMENT DISTRICT
- O.R.B. - OFFICIAL RECORD BOOK
- PC - POINT OF CURVATURE
- PNT - POINT OF NON TANGENCY
- PRC - POINT OF REVERSE CURVATURE
- PT - POINT OF TANGENCY
- R - RADIUS
- WME - WATER MANAGEMENT EASEMENT
- WMAE - WATER MANAGEMENT ACCESS EASEMENT
- PRM - DENOTES PERMANENT REFERENCE MONUMENT
 NAIL AND DISK STAMPED "PRM" LB 3591
 UNLESS OTHERWISE NOTED.
- PRM - DENOTES SET PERMANENT REFERENCE MONUMENT
 4"x4" CONCRETE MONUMENT WITH DISK
 STAMPED "C&W PRM LB3591" UNLESS
 OTHERWISE NOTED.
- △ - DENOTES HORIZONTAL CONTROL POINT
- ▲ - DENOTES SET PERMANENT REFERENCE MONUMENT
 NAIL AND DISK STAMPED "PRM" LB 3591
- (BLEDP6) - DENOTES BOUNDARY LINE OF EMERALD
 DUNES - PARCEL 6, PLAT BOOK 107, PAGE 68-69

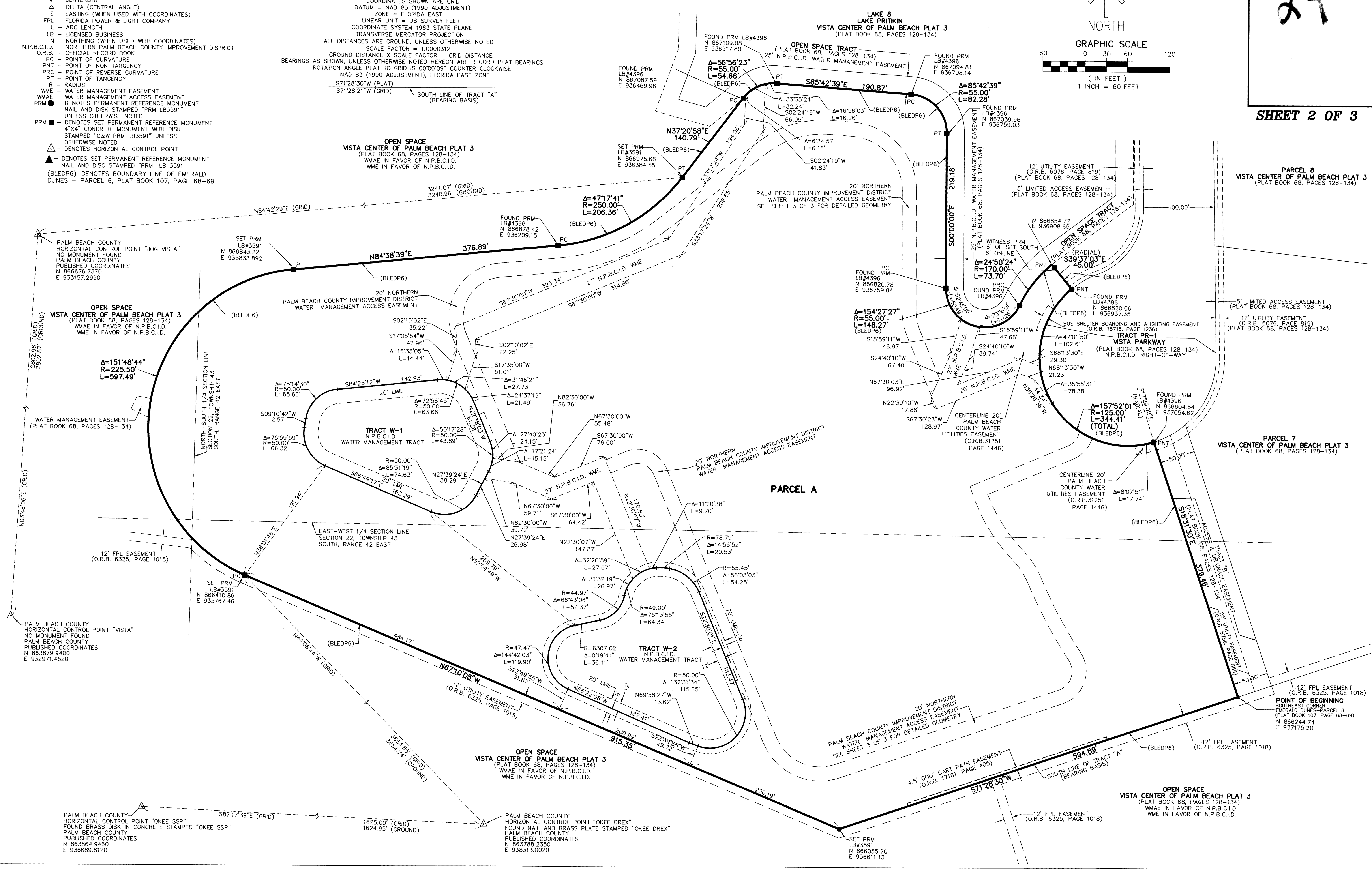
NOTES COORDINATES, BEARINGS AND DISTANCES

COORDINATES SHOWN ARE GRID
 DATUM = NAD 83 (1990 ADJUSTMENT)
 ZONE = FLORIDA EAST
 LINEAR UNIT = US SURVEY FEET
 COORDINATE SYSTEM 1983 STATE PLANE
 TRANSVERSE MERCATOR PROJECTION
 ALL DISTANCES ARE GROUND, UNLESS OTHERWISE NOTED
 SCALE FACTOR = 1.0000312
 GROUND DISTANCE X SCALE FACTOR = GRID DISTANCE
 BEARINGS AS SHOWN, UNLESS OTHERWISE NOTED HEREON ARE RECORD PLAT BEARINGS
 ROTATION ANGLE PLAT TO GRID IS 0°00'00" COUNTER CLOCKWISE
 NAD 83 (1990 ADJUSTMENT), FLORIDA EAST ZONE.
 S71°28'30"W (PLAT)
 S71°28'21"W (GRID) - SOUTH LINE OF TRACT "A"
 (BEARING BASIS)



24

SHEET 2 OF 3



PALM BEACH COUNTY
 HORIZONTAL CONTROL POINT "OKEE SSP"
 FOUND BRASS DISK IN CONCRETE STAMPED "OKEE SSP"
 PALM BEACH COUNTY
 PUBLISHED COORDINATES
 N 863864.9460
 E 936689.8120

PALM BEACH COUNTY
 HORIZONTAL CONTROL POINT "OKEE DREX"
 FOUND NAIL AND BRASS PLATE STAMPED "OKEE DREX"
 PALM BEACH COUNTY
 PUBLISHED COORDINATES
 N 863788.2350
 E 938313.0020

OPEN SPACE
 VISTA CENTER OF PALM BEACH PLAT 3
 (PLAT BOOK 68, PAGES 128-134)
 WMAE IN FAVOR OF N.P.B.C.I.D.
 WME IN FAVOR OF N.P.B.C.I.D.

POINT OF BEGINNING
 SOUTHEAST CORNER
 EMERALD DUNES-PARCEL 6
 (PLAT BOOK 107, PAGE 68-69)
 N 866244.74
 E 937175.20